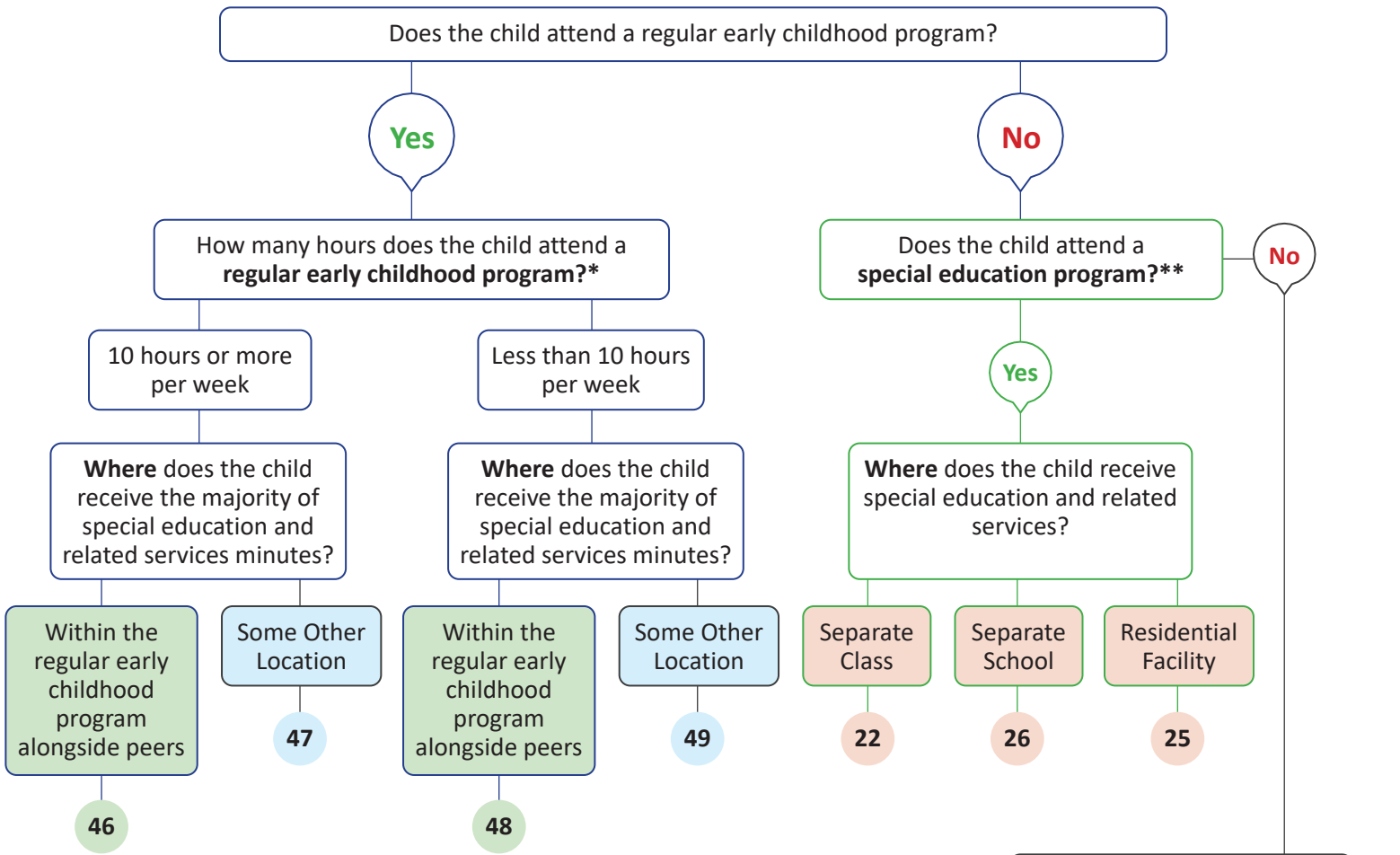


Michigan Updated B6 Decision Tree for Reporting Preschool Educational Environments for Children Ages 3-5 with IEPs

As of 2019, regardless of age, children who are enrolled in kindergarten or developmental K for any portion of the day are NOT to be included in B6 reporting. They are to be included in the B5 calculations.

Please refer to federal instructions and state guidance for additional reporting requirements when using this decision tree.



Report each child in only one category.

Definitions

***Regular Early Childhood Program** is defined as a program that includes 50 percent or more of children without an active IEP. This category may include, but is not limited to:

- Head Start,
- Preschool classes (public or private),
- Group child development center or childcare settings.

****Special Education Program** is defined as a program that includes less than 50 percent children without an active IEP. This category may include, but is not limited to:

- Special education classes in:
 - Regular School Buildings/ Portables
 - Childcare facilities
 - Outpatient Hospital facilities
 - Community-based settings
- Separate schools
- Residential facilities

B6 Calculations

- (a) Included - categories: **46 + 48**
- (b) Segregated - categories: **22+26+25**
- (c) Home - category: **23**